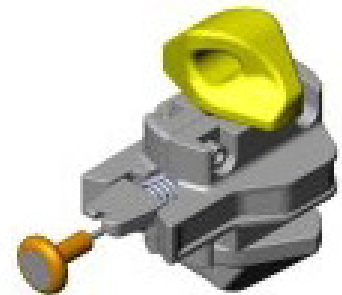


TWISTLOCK LOCKED



(BOTTOM CONE LOCKED)
TOP CONE OPEN
POSITION WITH
HANDLE UP

(TOP CONE LOCKED)
BOTTOM CONE OPEN
POSITION WITH
HANDLE DOWN

(TOP CONE LOCKED)
BOTTOM CONE OPEN
POSITION WITH
HANDLE LEFT



k	27/04/10	WM	spare parts added on page 2, replaces K-F6/01, K-F6/03, K-F6/05						
j	16/05/08	EN	General update						
Mod.	Date	Check	Description						
Scale	1:5	Strength (kN):			Weight	5.6 kg	Material	Finish	Galvanised
	MSL	Tension	250	Shear	210	Compr.			
	PL	Tension	375	Shear	273	Compr.			
	BL	Tension	500	Shear	420	Compr.			

Description: **Semi automatic twistlock** Project: